

Netvox Technology Co., Ltd.

Headquarter

Address : NO. 21-1, SEC. 1, ZHONGHUA WEST RD., SOUTH DIST.,
TAINAN CITY, TAIWAN 702

E-mail : sales@netvox.com.tw

website : www.netvox.com.cn / www.netvox.com.tw

Tel : 886-6-2617641 2654878 2612119

Fax : 886-6-2656120

Netvox Technology Co., Ltd.(Xiamen)

Factory

Address : NO. 2, XINFENG 2 ROAD, XIAMEN TORCH HI-TECH INDUSTRIAL
DEVELOPMENT ZONE, XIAMEN, P. R. CHINA 361006

E-mail : dys-2@netvox.com.cn / dyx@netvox.com.cn

website : www.netvox.com.cn www.netvox.com.tw

Tel : 86-592-5717179 5717182 - 5717188

Fax : 86-592-5717180

netvox[®]
— Inspire the Next —

LoRa Alliance[™] Member



Internet of Things Total Solution

netvox[®] M2

Cloud Computing Based

WIRELESS Smart System

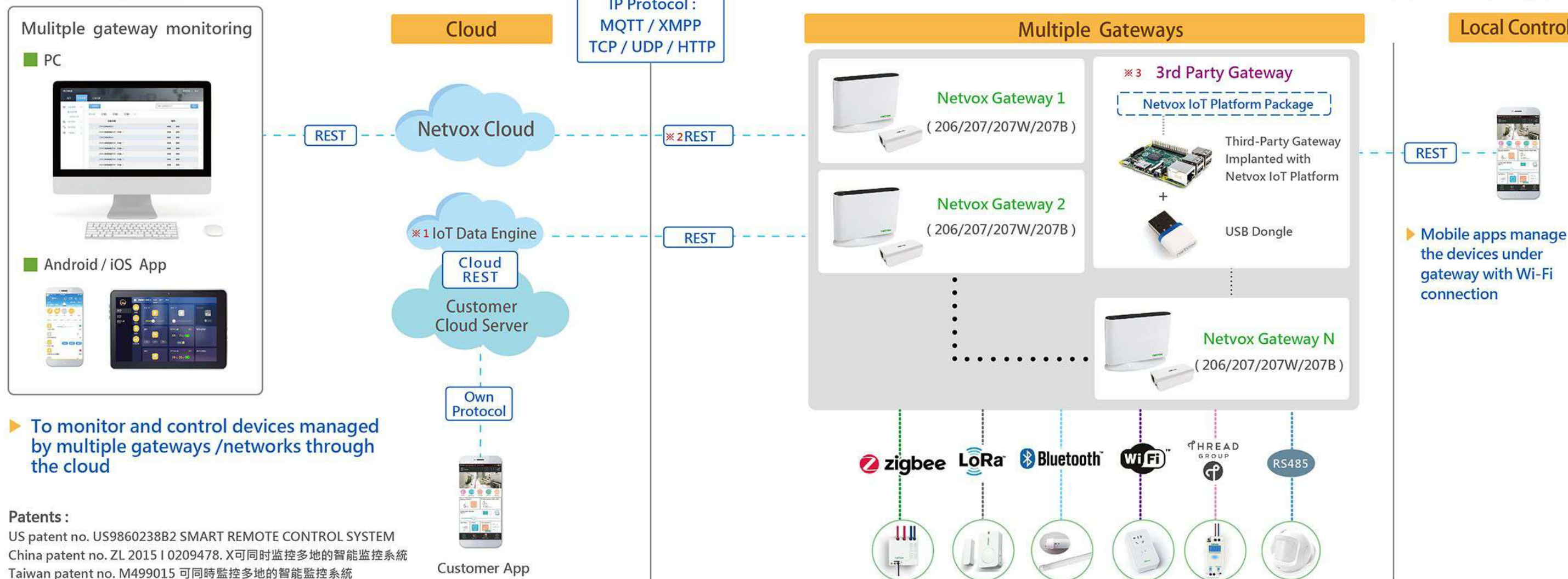
Interactive · Extensive · Intelligent · Complete



netvox^{M2} End-to-End IoT Total Solution

LoRa Alliance[™] Member

Protocols Based on Zigbee HA V1.2 or LoRaWAN, and can be customized for private protocol.



Multiple gateway monitoring platform functions :

- 1.Data Checking
- 2.Data Reporting
- 3.Centralized Alarm Management
- 4.Failure Reporting and Processing

Netvox M2 IoT System

Netvox M2 system is based on the patented IoT-Based Multi-Network Management Platform that enables users to simultaneously monitor and control the IoT devices on many different sites from one app anytime, anywhere. With Zigbee and Private LoRa devices supported in one network, Netvox M2 system is truly versatile for many applications e.g. Building Automation, Environmental Monitoring and Smart Manufacturing. Users can create If-Then rules with multiple conditions from the app, and we are able to provide data access for users to retrieve their device big data from Netvox cloud server.



Multi-Gateway Management



File Support on Third-Party Gateway



Multi-Network Compatibility (ZigBee & LoRa & WiFi)



500+ Netvox Multi-Functional IoT Devices



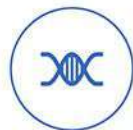
Friendly App/PC Interface



Support on Third-Party Cloud



Friendly App - Graphical Condition-Based Linkage Settings



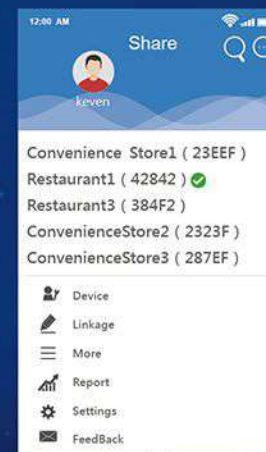
Stable Communication

LoRa Alliance Member

Protocols Based on Zigbee HA V1.2 or LoRaWAN, and can be customized for private protocol.

netvox[®]M2

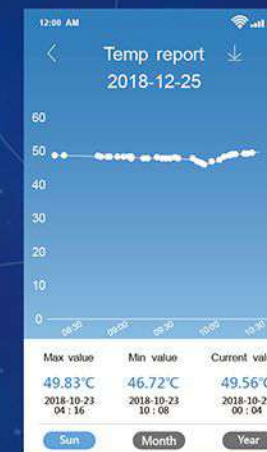
The Very First Smart IoT System
Made for Shop Management in the World



One App account can manage multiple shops by switching between gateways.



Create If-Then rules with multiple conditions.

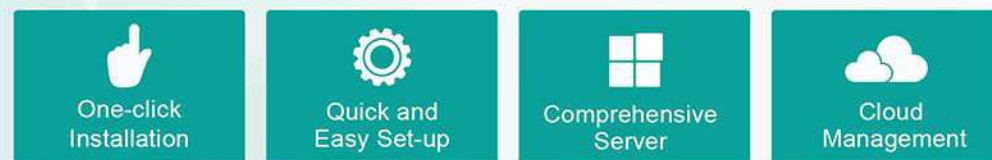


Monitor the variation in temperature and humidity and analyze real-time data for temperature/humidity control.



Energy data is pushed to the cloud via gateway for ranking reports by days/months / years / billing amount.

Netvox M2 Lite - On-Premise Private Cloud Total Solution



The M2 Lite IoT Data Engine ported into customer's servers provides customers with more secure and flexible applications.

M2 Lite IoT Data Engine

M2 Lite IoT Data Engine is suitable for small field domains and private architecture. Customers do not need to purchase cloud services, such as AWS, or create their own cloud server. As long as they have a computer, they can install it with one click and immediately use Netvox's latest IoT system with web-based administrator system and M2 Apps.

Quick and Easy Set-up & One-click Installation

We will provide an authorized USB dongle with an installation file, and customers will prepare the hardware and operating system. In just a few steps, M2 Lite can be installed on the customer's computer. Customers can monitor the status of Gateways and collect data from Netvox IoT devices in a timely manner to save time and cost.

- A USB Dongle with an installation software package in it
- A one-click installation instruction Doc.
- Prepare the hardware and operating system
- Install the software with simple steps

After the installation is completed, it is an on-premise private cloud that ensures data security and prevents data loss caused by internet connection issues.

Pre-Installation



Protocols Based on Zigbee HA V1.2 or LoRaWAN, and can be customized for private protocol.

Netvox IoT Data Engine

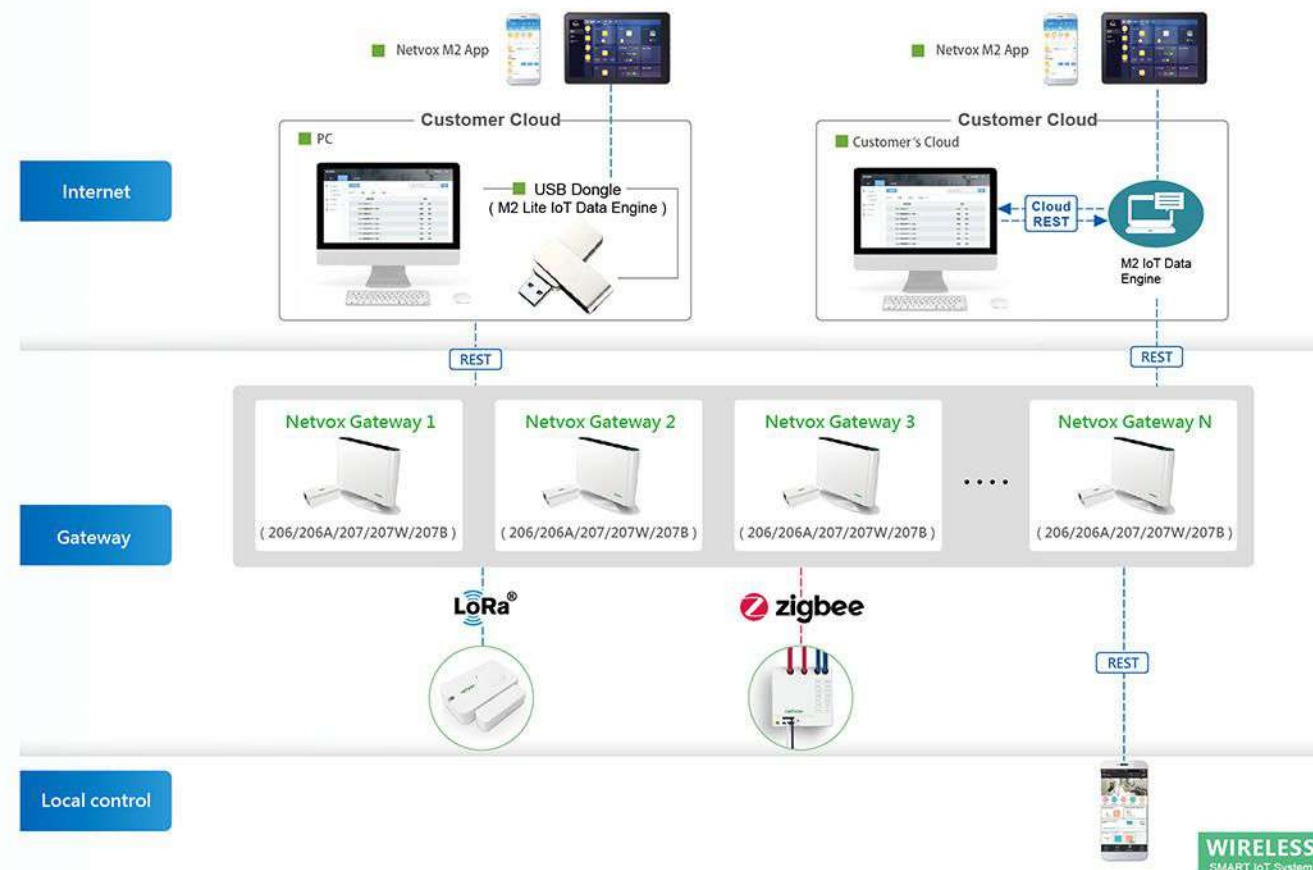
IoT Data Engine

If customers want to host their own IoT cloud services, Netvox sells license of Netvox IoT Data engine and Cloud REST API that allow customers to be an IoT service provider. After IoT Data Engine deployment, all data will be pushed to their cloud server without passing through Netvox cloud and thus ensures data security. In addition to apps, PC-based network management system will be available for control center monitoring. Cloud REST API will be available for customer to receive data through IoT Data Engine and develop an application.

The IoT Data Engine ported into customer's servers

provides customers with Netvox M2 ready-to-use IoT applications for the management of cloud servers, gateways and Netvox IoT devices. Netvox IoT Data Engine aims to provide customers with system stability, security and scalability.

The communication architecture of the IoT data engine:



IoT Starter Kit

Netvox Cloud

Netvox IoT Development Platform Features

- Enable the Control of 500+ Wireless Sensors and Devices
- Network Connection: Automatic Switch between Local LAN and Internet
- IoT Development Platform Migration: MTK, Realtek, Amlogic, Broadcom, Raspberry Pi, Intel DK300, etc.
- Operating System Supported: Linux and Android
- Cloud Platform: Big Data Analysis and Customized Cloud Platform Supported
- Wireless Protocol: Zigbee, WiFi, Bluetooth, Thread, LoRa, iBeacon and Other Wireless Protocols
- IoT Applications: Home Automation, Intelligent Agriculture, Environmental Monitoring, etc.



Raspberry Pi II



Zigbee HA 1.2 Dongle



Z311J

Window/Door Sensor



Z809A

Smart Plug (Socket Type Selectable)



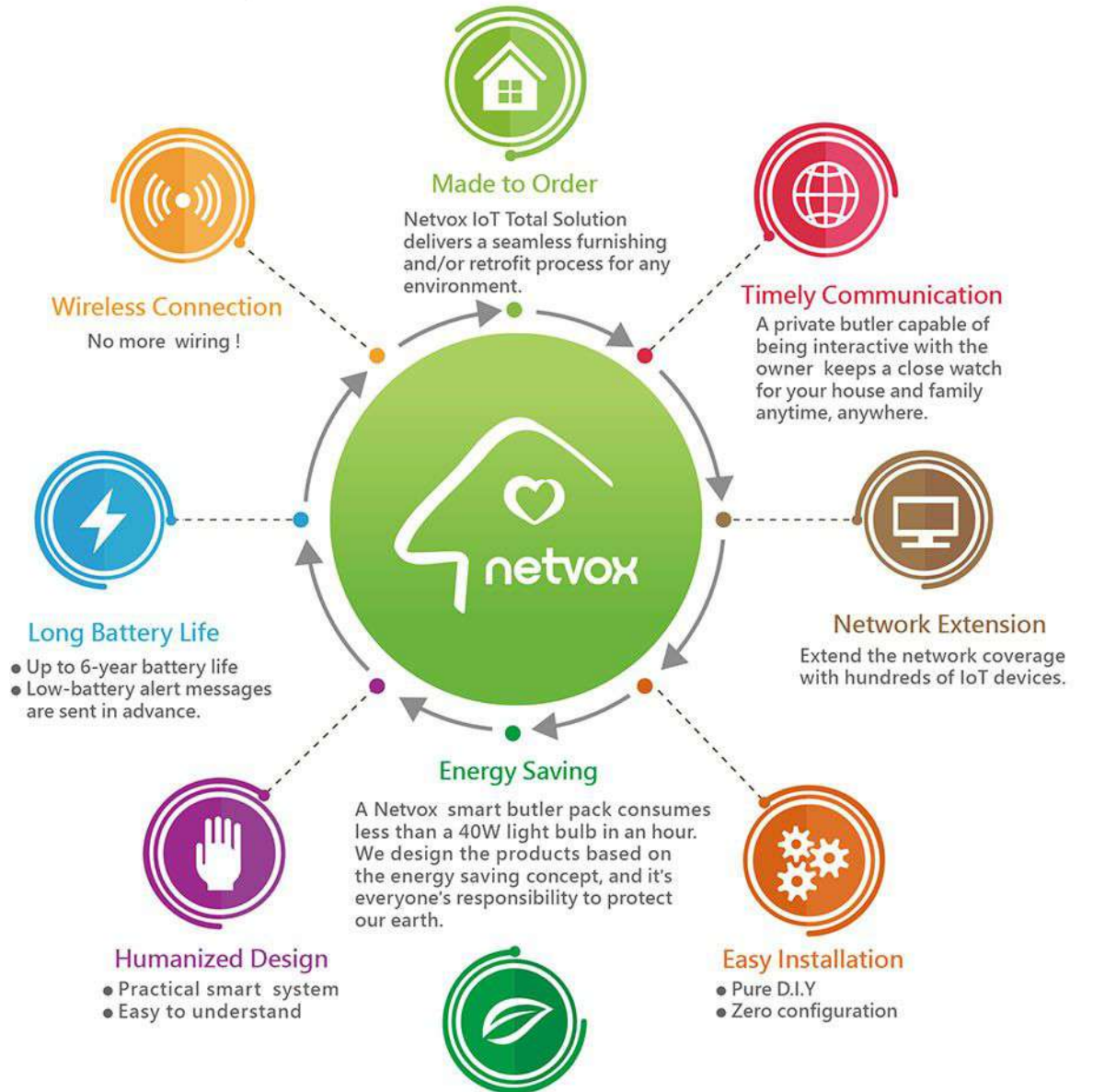
Z716A

Temperature/Humidity Sensor

Cloud Computing Based WIRELESS Smart System

LoRa Alliance Member

Protocols Based on Zigbee HA V1.2 or LoRaWAN, and can be customized for private protocol.



LPWA Smart Shop Kit A 24H Multi-Shop Manager



Cloud Gateway R206A  <ul style="list-style-type: none"> Wireless & Wi-Fi Connection Smart Management Accessible from Anywhere, Anytime 	Wireless Devices  <ul style="list-style-type: none"> 500+ Products Fully Zigbee HA Compatible Low Power Consumption Easy Installation 	IP Cam  <ul style="list-style-type: none"> Wireless IP Camera Remote Internet Monitoring 2-way Audio 	IoT Gateway Intelligence  <ul style="list-style-type: none"> IoT Platform HA Daemon / SDK / Cloud Agent Included Integrated with Your Modem / Set Top Box
IoT System  <ul style="list-style-type: none"> Create Your Own Smart Services Create Your Own Cloud 	APP  <ul style="list-style-type: none"> iOS/ Android Portable Controller Smart Management <p>patent pending</p>	Netvox Cloud Services  <ul style="list-style-type: none"> Smart Monitoring Manage Home/Office Anytime, Anywhere 	REST API  <ul style="list-style-type: none"> For Building Cloud For App Development Cost Effective



Wireless Water Leak Detector (R311W)

It will send an alert message to your application via gateway when either of the water sensors detects water leakage.



Wireless Door/Window Sensor (R311A)

It will detect and send an alert message to your application about unexpected door/window activities by setting up rules in advance.



Cloud Home Gateway (R206A)

It is a private LoRa gateway that can also support Zigbee devices.



Wireless Vibration Sensor Rolling Ball Type (R718DA)

Installed on a mousetrap, it will send an alert message to your application when there is a catch to ensure timely disposal and save you the bother of checking the traps.



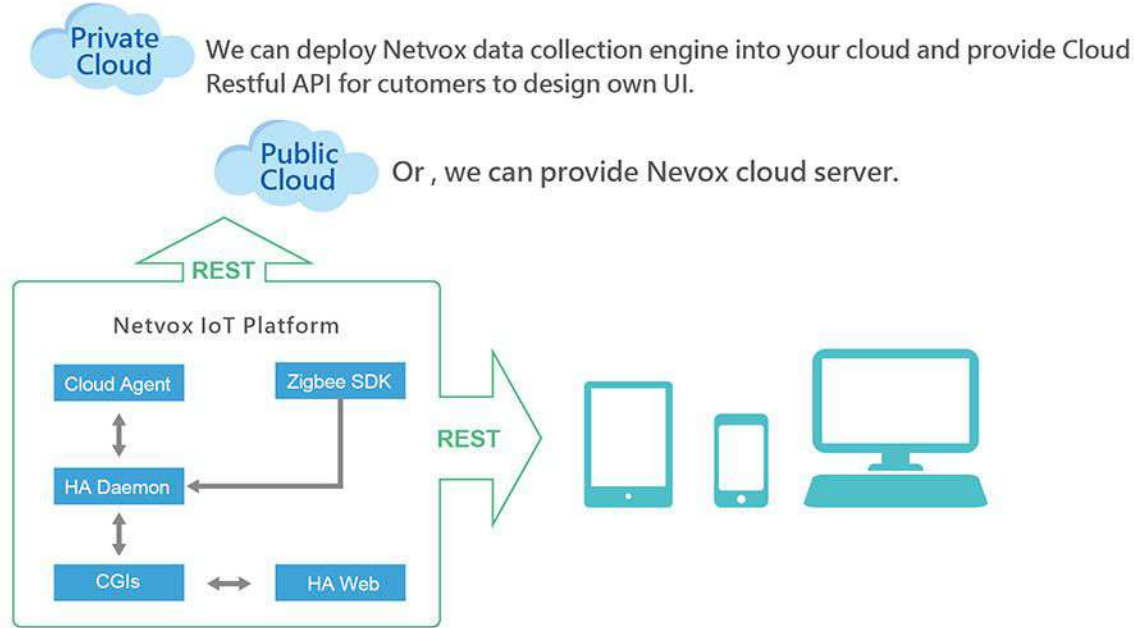
Wireless Temperature and Humidity Sensor (R718A)

It can be placed in a freezer and send an alert message to your application when the temperature or humidity is above or below the preset threshold.

1 Gateway and 4 Smart Devices

Netvox IoT Cloud Solution

【 A cloud platform customized to meet your needs 】



Netvox IoT Total Solution - Gateway Solution



Netvox IoT Solution

LoRa Alliance Member

Protocols Based on Zigbee HA V1.2 or LoRaWAN, and can be customized for private protocol.



Indoor location

- Air Conditioning System Control
- Personnel Monitoring



Home Automation

- Power Monitoring
- Household Protection



Healthcare

- Emergency Equipment
- Medication Management



Agriculture Automation

- Environment Monitoring
- Watering Control



Smart Office

- PIR Motion Sensing
- Intelligent Light Dimming



Smart Exhibition

- Video Monitoring
- Atmosphere Adjustment



Smart Building

- Light Control
- Indoor Air Quality



IoT Access Control

- Video Surveillance
- Visitor Management



IoT Engine Room

- Power System
- Environment Control



Intelligent Retail

- Sensor-Based Security System
- Product Management

Netvox IoT Smart Agriculture



Simple structure: Only one control center is connected to internet via Ethernet, WiFi or 3G / 4G. It replaces PC and PLC to perform timing and other correlation control.

Device monitoring: current / voltage / operating status monitoring.

Remote monitoring: Monitor multiple greenhouses and farms simultaneously, and crop conditions can be observed and recorded with images.

High mobility: With fewer wires, the devices can be placed anywhere to save space.

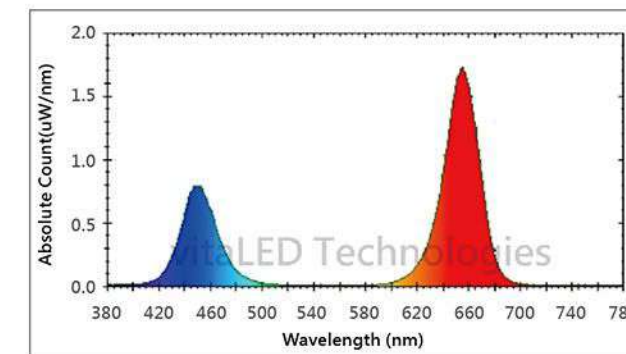
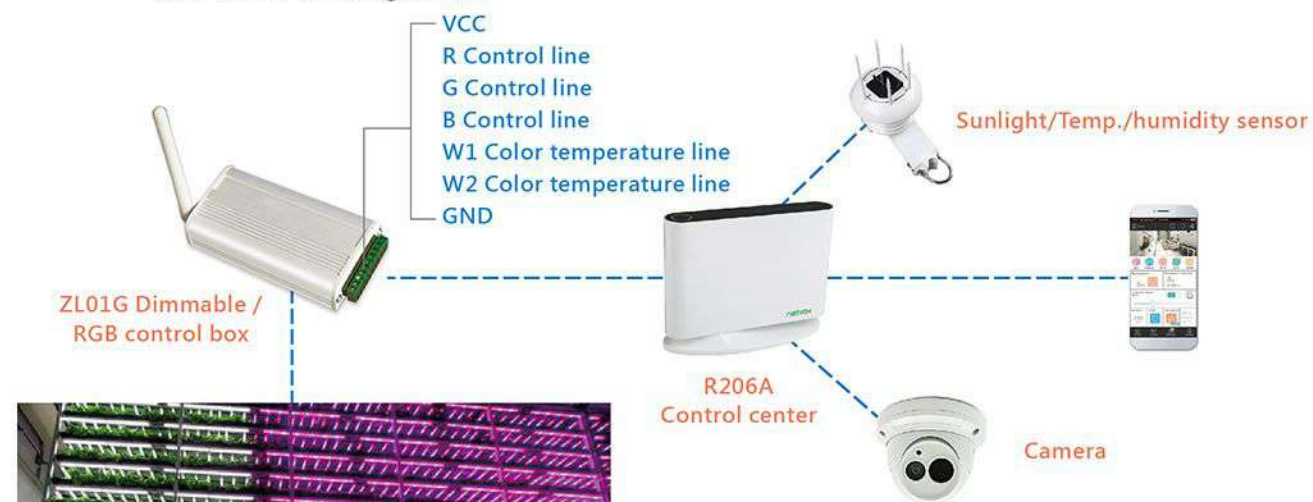
Automatic scene adjustments: Make adjustments according to the season, climate, specific factors (flood, drought) and different environment.

Netvox IoT Plant Factory

LoRa Alliance Member

Protocols Based on Zigbee HA V1.2 or LoRaWAN, and can be customized for private protocol.

【ZL01G】 is a Zigbee dimmable / RGB control box working with RGB lamps and light strips. It can communicate with end devices through Zigbee network. There are two power supplies, DC12V and 24V. ZL01G can control V+ input RGB panels / lamps, and control RGB colors and brightness.



LED Plant lamp spectrum

Netvox IoT Home Automation

Surveillance System

Pair devices and set up arming/disarming security system to prevent theft and accident.

Door / Window Control

Intelligent curtain, door lock and security devices for real-time control

IP Cam Monitoring

Real-time IP camera monitoring that alerts you in time.

Elderly Care

Keep track of the location of elders, children and staff to prevent emergency.

Energy Management

Devices send power consuming notifications and automatically turn off to save energy.

Remote Control

Remotely control the smart devices at home via Android/iOS application.

IF-Then Rules

Every device has its own unique feature and function but works with each other based on if-then rules.



Messaging / Alarm System

You can be informed by application, text messages or phone call when there is an event.

Scenario Mode Control

Press one button to turn on the radio, DVD and home theater all at once with scene settings.

Watering Automation

Control the farming or gardening system via application or with a timer

Timed Device Control

To control devices or execute a specific rule, simply set up a regular or delayed time-based rule.

Light Control

Switch on/off or dim lights with control panel and scene settings.

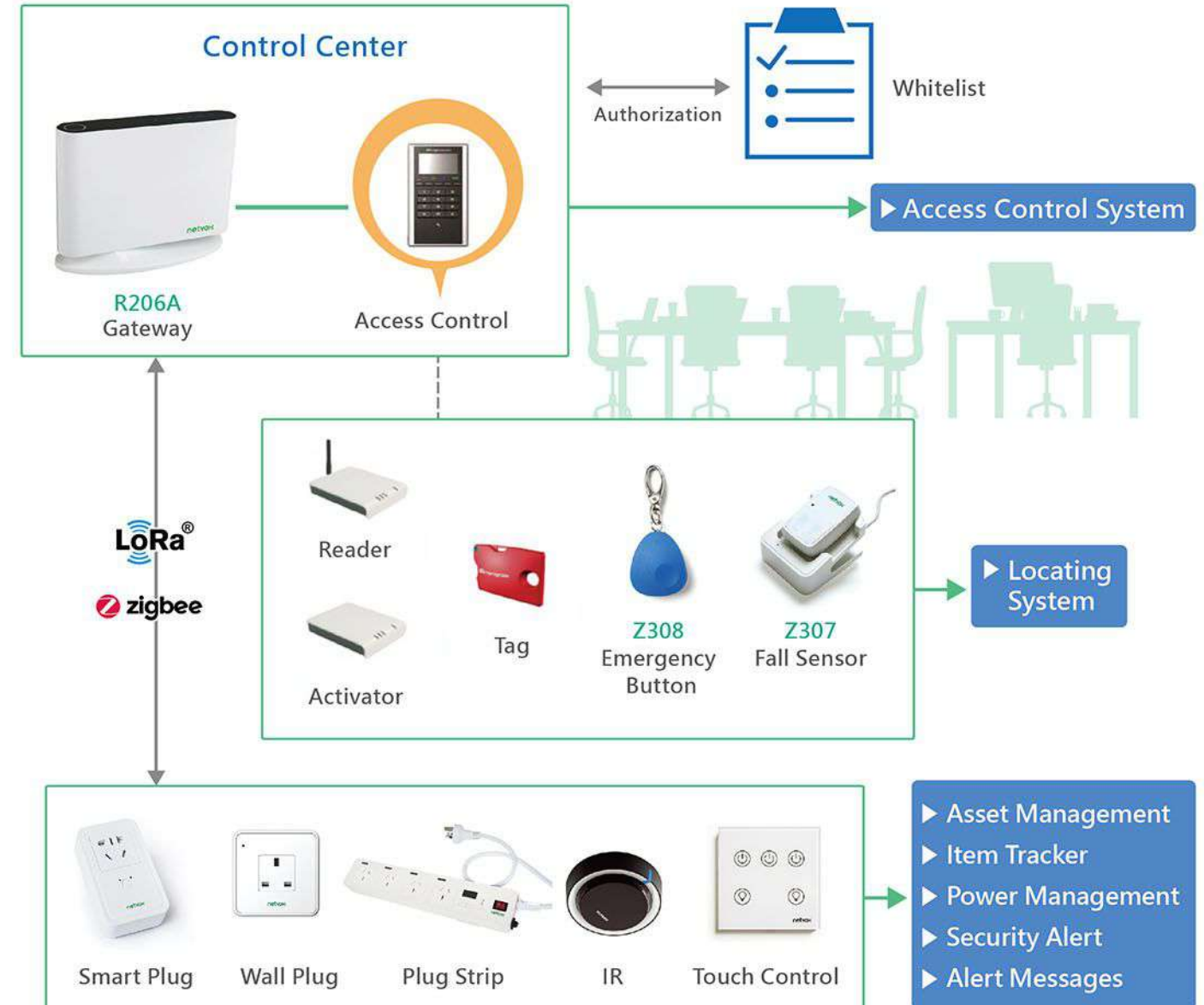
Community Security

Notify your neighbor or close ones when there is an emergency so they can react in time.

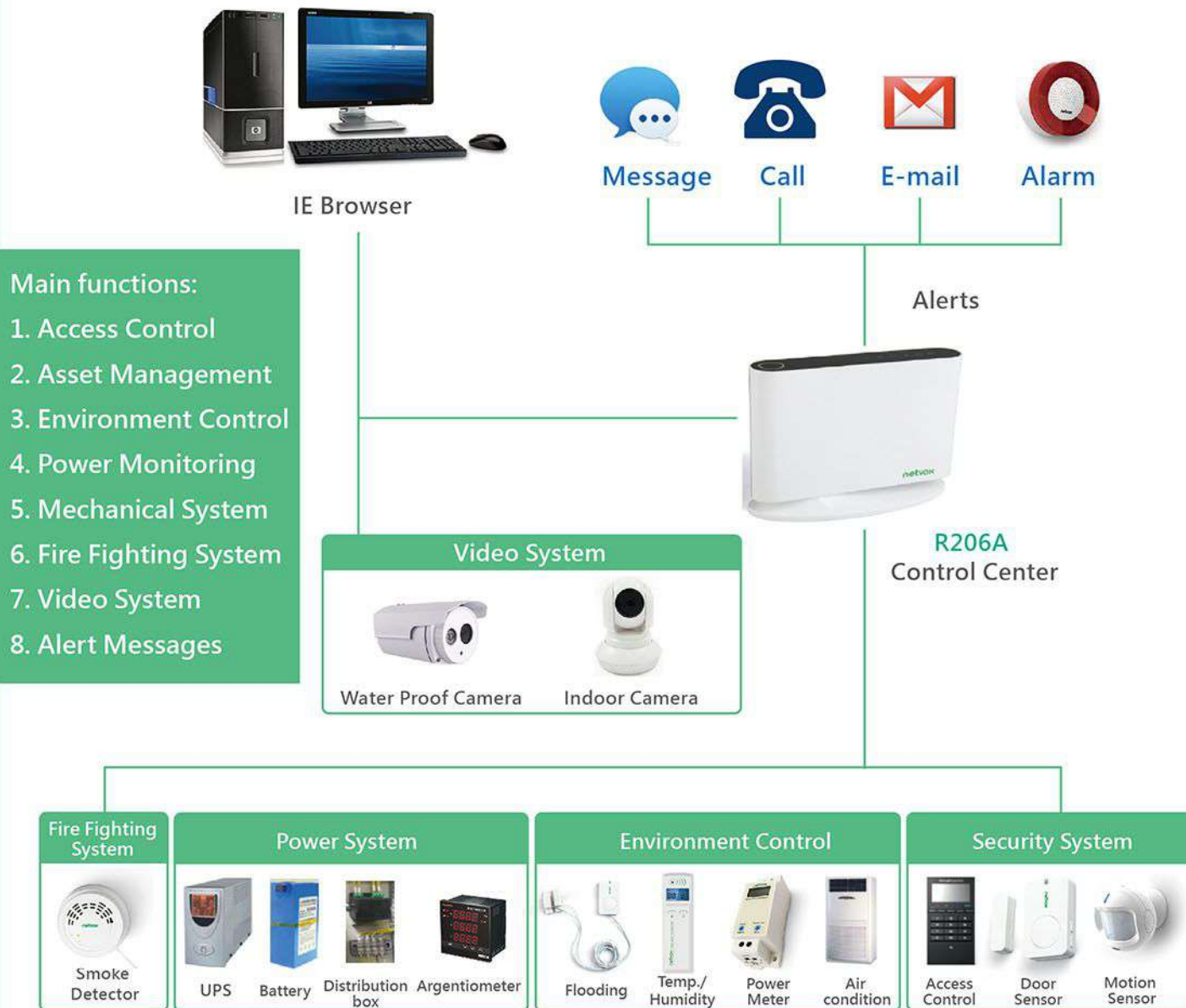
Netvox IoT Smart Office

LoRa Alliance Member

Protocols Based on Zigbee HA V1.2 or LoRaWAN, and can be customized for private protocol.



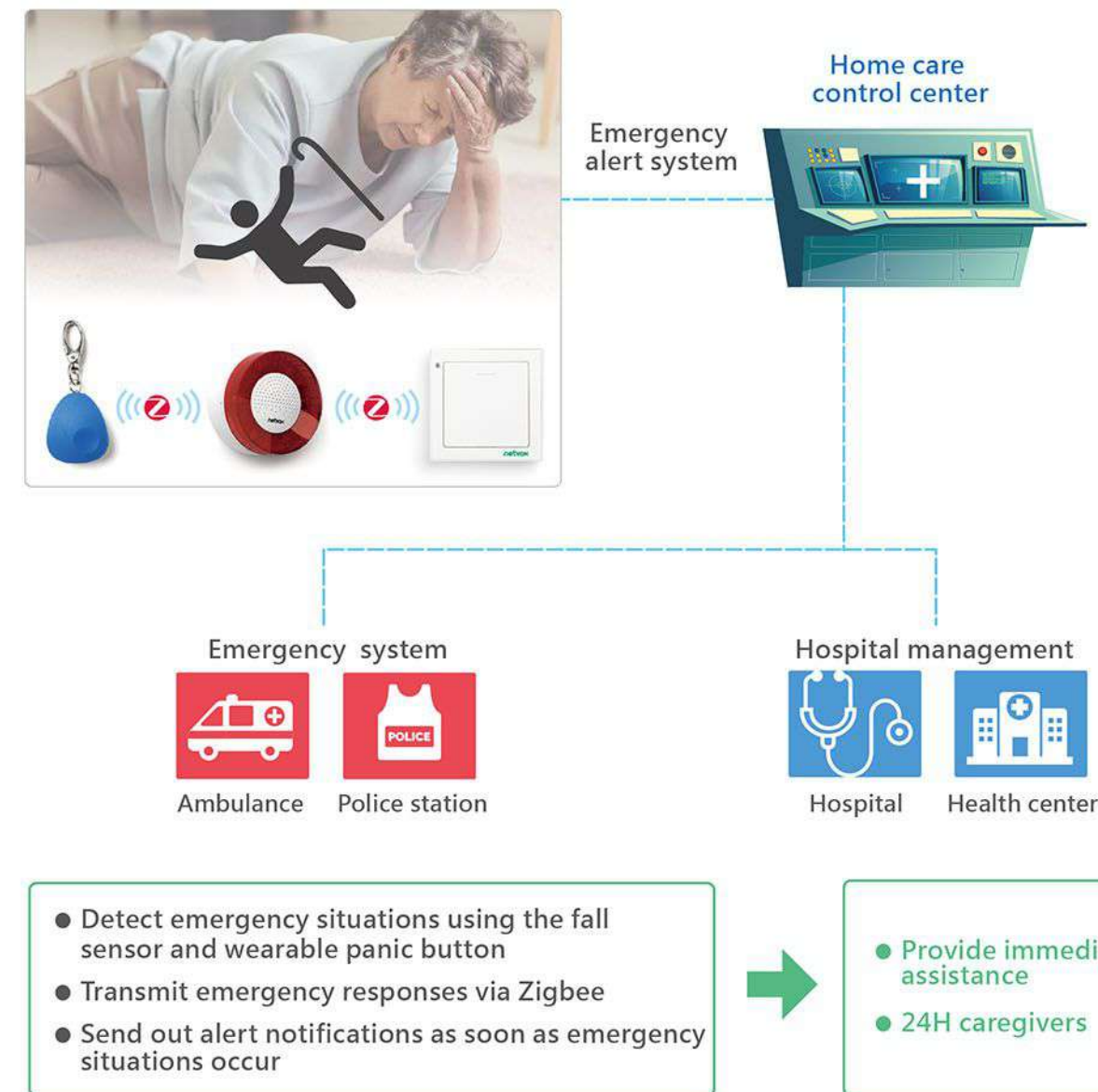
Netvox IoT Integrated Data Center



Netvox IoT Emergency Notification

LoRa Alliance Member

Protocols Based on Zigbee HA V1.2 or LoRaWAN, and can be customized for private protocol.



LoRa Gateway & Security System



R206 Wireless IoT Controller that supports RTC and WiFi (DC-powered)



R206A Wireless Dual-Mode IoT Controller that supports RTC and WiFi (DC-powered)



R207 Wireless IoT Controller (DC-powered)



R311A
Wireless Door/Window Sensor



R311CA
Wireless 2-Input Dry Contact Interface



R311CB
Wireless Window Sensor with Glass Break Detector



R311CC
Wireless 2-Gang Door/Window Sensor



R311DA/R311DB
Wireless Vibration Sensor (Rolling Ball / Spring Type)



R311FA
Wireless Activity Detection Sensor



R311W
Wireless 2-Gang Water Leak Detector

LoRa Security System

LoRa Alliance Member

Protocols Based on Zigbee HA V1.2 or LoRaWAN, and can be customized for private protocol.



R312A
Wireless Emergency Button



R313A
Wireless Door/Window Sensor



R313CA
Wireless 2-Input Dry Contact Interface



R313CB
Wireless Window Sensor with Glass Break Detector



R313CC
Wireless 2-Gang Door/Window Sensor



R313DA
Wireless Vibration Sensor Rolling Ball Type



R313DB
Wireless Vibration Sensor Spring Type



R313FA
Wireless Activity Detection Sensor



R313MA
Wireless Emergency Button

LoRa Security System



R313W
Wireless 2-Gang
Water Leak Detector



R602A
Wireless Siren



R718DA
Wireless Vibration Sensor
Rolling Ball Type



R718DA2
Wireless 2-Gang Vibration
Sensor Rolling Ball Type



R718DB
Wireless Vibration Sensor



R718DB2
Wireless 2-Gang Vibration
Sensor



R718F
Wireless Reed Switch Open/
Close Detection Sensor

R718LB
Wireless Hall Type Open/
Close Detection Sensor



R718F2
Wireless 2-Gang Reed Switch
Open/Close Detection Sensor

R718LB2
Wireless 2-Gang Hall Type
Open/Close Detection Sensor



R718J
Wireless Dry Contact
Interface



R718J2
Wireless 2-Input Dry
Contact Interface

LoRa Alliance Member

Protocols Based on Zigbee HA V1.2 or LoRaWAN,
and can be customized for private protocol.

LoRa Security System



R718MBA
Wireless Activity Detection
Sensor



R718WA
Wireless Water Leak
Detector



R718WA2
Wireless 2-Gang Water
Leak Detector



R718WB
Wireless Water Leak
Detector with Rope Sensor



R718WB2
Wireless 2-Gang Water Leak
Detector with Rope Sensor



R718WBA
Wireless Water Leak Detector
with Temperature and
Humidity Sensor



R718WE
Water Leak Detection &
Location Sensor



R720B
Wireless Temperature
and Humidity Sensor with
Activity Detection Sensor



RA02A
Wireless Smoke Detector
RA02C
Wireless CO Detector



RA07W
Wireless Water Leak
Detection and Location
Sensor



RB02I
Wireless Emergency
Push Button



RB11E
Wireless Occupancy/ Light/
Temperature Sensor

LoRa Environmental Monitoring



R711
Wireless Temperature
and Humidity Sensor



R712
Wireless Outdoor Temperature
and Humidity Sensor



R718AD
Wireless Temperature
Sensor (DS18B20)



R718A
Wireless Temperature and Humidity
Sensor For Low Temperature
Environment

R718AB
Wireless Temperature and
Humidity Sensor



R718B
Wireless Temperature
Sensor (PT1000)



R718B2
Wireless 2-Gang
Temperature Sensor (PT1000)



R718B4
Wireless 4-Gang
Temperature Sensor



R718CK/CT
Wireless Thermocouple
Sensor-Type K / T

LoRa Environmental Monitoring

LoRa Alliance Member

Protocols Based on Zigbee HA V1.2 or LoRaWAN,
and can be customized for private protocol.



R718CK2/CT2
Wireless 2-Gang Thermocouple
Sensor-Type K / T



R718PB13
Wireless Soil Moisture Sensor



R718PB14
Wireless Soil Moisture /
Temperature / Electrical
Conductivity Sensor



R718PB15
Wireless Soil Moisture /
Temperature / Electrical
Conductivity Sensor



R718PB15A
Wireless Soil Moisture /
Temperature / Electrical
Conductivity Sensor with a
Waterproof Housing



R718PC
Wireless RS485 Adapter
(DC-powered)

LoRa Environmental Monitoring



R718PA2 Wireless NO Sensor (DC-powered)
R718PA4 Wireless H2S Sensor (DC-powered)
R718PA7 Wireless Noise Sensor (DC-powered)



R718PA3 Wireless O3 Sensor (DC-powered)
R718PA5 Wireless NO2 Sensor (DC-powered)
R718PA6 Wireless SO2 Sensor (DC-powered)



R718PDA
 Wireless RS232 Adapter
 (DC-powered)



R718R2 Wireless NO Sensor
R718R3 Wireless O3 Sensor
R718R4 Wireless H2S Sensor
R718R5 Wireless NO2 Sensor
R718R6 Wireless SO2 Sensor
R718R21 Wireless Ammonia Sensor



R720A
 Wireless Temperature and Humidity
 Sensor For Low Temperature
R720C
 Wireless Air Pressure and
 Temperature Sensor
R720D
 Wireless Temperature Sensor
R720E
 Wireless TVOC Sensor



R72615A
 Wireless CO2/Temperature
 /Humidity Sensor
R72616A
 Wireless PM2.5/Temperature
 /Humidity Sensor

LoRa Alliance Member

Protocols Based on Zigbee HA V1.2 or LoRaWAN,
 and can be customized for private protocol.

LoRa Environmental Monitoring



R72615
 Wireless Outdoor CO2/
 Temperature/Humidity Sensor
 with Solar Panel
R72616
 Wireless Outdoor PM2.5/
 Temperature/Humidity Sensor
 with Solar Panel



R72623
 Wireless Outdoor PM2.5/
 Noise/Temperature/Humidity
 Sensor with Solar Panel
R72624
 Wireless Outdoor Noise/
 Temperature/Humidity
 Sensor with Solar Panel



RA0716Y
 Wireless Outdoor PM2.5/
 Temperature/Humidity Sensor
 (DC-powered)
RA0723Y
 Wireless Outdoor PM2.5/
 Noise/Temperature/
 Humidity Sensor



RA0715Y
 Wireless Outdoor CO2 /
 Temperature / Humidity Sensor
RA0724Y
 Wireless Outdoor Noise /
 Temperature / Humidity Sensor

LoRa Environmental Monitoring



RA0701
Wireless CO Sensor
(DC-powered)



RA0708
Wireless Water pH Sensor
(DC-powered)



RA0710
Wireless Water Turbidity Sensor
(DC-powered)



RA0711
Wireless Water Level Sensor
(DC-powered)



RA0713
Wireless Soil Moisture Sensor
(DC-powered)



RA0715
Wireless CO2/Temperature/Humidity
Sensor (DC-powered)



RA0716
Wireless PM2.5/Temperature/Humidity
Sensor (DC-powered)

LoRa Smart Building

LoRa Alliance Member

Protocols Based on Zigbee HA V1.2 or LoRaWAN,
and can be customized for private protocol.



R211
Wireless IR Blaster
(DC-powered)



R311B / R311G
Wireless Light Sensor



R311D
Wireless Asset Sensor



R311WA
Wireless 2-Gang Seat
Occupancy Sensor



R312
Wireless Door Bell Button



R313B
Wireless Light Sensor



R313D
Wireless Asset Sensor



R313G
Wireless Light Sensor

LoRa Smart Building



R313M
Wireless Door Bell Button



R313WA
Wireless 2-Gang Seat
Occupancy Sensor



R718G
Wireless Light Sensor



R718MA
Wireless Asset Sensor



RB02B
Wireless 2-Gang Push Button



RB02C
Wireless 3-Gang Push Button



R831
Wireless Multi-Functional
Control Box - 3-Gang Dry Contact
and 3-Gang Relay



R718PQ
Wireless Short-Range
Occupancy Sensor



R718PQA
Wireless Toilet Occupancy
Sensor

LoRa Smart Building

LoRa Alliance Member

Protocols Based on Zigbee HA V1.2 or LoRaWAN,
and can be customized for private protocol.



R718VA
Wireless Capacitive Proximity
Sensor



R718VB
Wireless Capacitive Proximity
Sensor



R809A
Wireless Plug-and-Play Power
Outlet with Consumption Monitoring



R809A01
Wireless Plug-and-Play Power Outlet
with Consumption Monitoring and
Power Outage Detection



R816B
Wireless Wall-Mounted Power
Socket with Consumption
Monitoring



R816B01
Wireless Wall-Mounted Power
Socket with Consumption Monitoring
and Power Outage Detection



R311FB Wireless Activity Event Counter
R311FC Wireless Activity Timer



R313FB Wireless Activity Event Counter
R313FC Wireless Activity Timer



R718E
Wireless Accelerometer and Surface Temperature Sensor



R718IJK
Wireless Multi-Sensor



R718MBB Wireless Activity Event Counter
R718MBC Wireless Activity Timer



R718N1
Wireless 1-Phase Current Meter (1x30A Solid Core CT)



R718H
Wireless Pulse Counter Interface



R718H2
Wireless 2-Input Pulse Counter Interface



R718H4
Wireless 4-Input Pulse Counter Interface



R718N13
Wireless 1-Phase Current Meter (1 x 30A Clamp-On CT)



R718N17
Wireless 1-Phase Current Meter (1x75A Clamp-On CT)



R718N115
Wireless 1-Phase Current Meter (1x150A Clamp-On CT)



R718IA
Wireless 0-5V ADC Sampling Interface

R718IB
Wireless 0-10V ADC Sampling Interface

R718KA
Wireless mA Current Meter Interface



R718IA2
Wireless 2-Input 0-5V ADC Sampling Interface

R718IB2
Wireless 2-Input 0-10V ADC Sampling Interface

R718KA2
Wireless 2-Input mA Current Meter Interface



R718N125
Wireless 1-Phase Current Meter (1x250A Clamp-On CT)



R718N163
Wireless 1-Phase Current Meter (1x630A Clamp-On CT)



R718N3
Wireless 3-Phase Current Meter (3x60A Solid Core CT)



R718N37
Wireless 3-Phase Current Meter
(3x75A Clamp-On CT)



R718N315
Wireless 3-Phase Current Meter
(3x150A Clamp-On CT)



R718N325
Wireless 3-Phase Current Meter
(3x250A Clamp-On CT)



R718NL163
Wireless Light Sensor and 1-Phase
Current Meter (1 x 630A Clamp-On CT)



R718NL3
Wireless Light Sensor and 3-Phase
Current Meter (3 x 60A Solid Core CT)



R718NL37
Wireless Light Sensor and 3-Phase
Current Meter (3 x 75A Clamp-On CT)



R718N363
Wireless 3-Phase Current Meter
(3x630A Clamp-On CT)



R718NL1
Wireless Light Sensor and 1-Phase
Current Meter (1 x 30A Solid Core CT)



R718NL13
Wireless Light Sensor and 1-Phase
Current Meter (1 x 30A Clamp-On CT)



R718NL315
Wireless Light Sensor and 3-Phase
Current Meter (3 x 150A Clamp-On CT)



R718NL325
Wireless Light Sensor and 3-Phase
Current Meter (3 x 250A Clamp-On CT)



R718NL363
Wireless Light Sensor and 3-Phase
Current Meter (3 x 630A Clamp-On CT)



R718NL17
Wireless Light Sensor and 1-Phase
Current Meter (1 x 75A Clamp-On CT)



R718NL115
Wireless Light Sensor and 1-Phase
Current Meter (1 x 150A Clamp-On CT)



R718NL125
Wireless Light Sensor and 1-Phase
Current Meter (1 x 250A Clamp-On CT)



R718PA22
Wireless Bottom-Mounted
Ultrasonic Liquid Level Sensor



R718T
Wireless Push Button
Interface



R718T2
Wireless 2-Input Push
Button Interface

LoRa Smart City



R311K
Wireless Tilt Sensor



R313K
Wireless Tilt Sensor



R718EA
Wireless Tilt Angle and
Temperature Sensor



R718X
Wireless Waste Bin Sensor



R719
Wirelessly Surface- Mounted
Parking Sensor



R735
Wireless In-Ground Parking
Sensor

LoRa R730 Series

LoRa Alliance Member

Protocols Based on Zigbee HA V1.2 or LoRaWAN,
and can be customized for private protocol.



R730CX/CX2 Wireless Thermocouple Temperature sensor (1/2-Gang)

R730DA/DA2 Wireless Vibration Sensor, Rolling Ball Type(1/2-Gang)

R730DB/DB2 Wireless Vibration Sensor, Spring Type(1/2-Gang)

R730F/F2 Wireless Reed Switch Open/Close Detection Sensor(1/2-Gang)

R730H/H2 Wireless Pulse Counter Interface(1/2-Input)

R730IA/IA2 Wireless 0-5V ADC Sampling Interface(1/2-Input)

R730IB/IB2 Wireless 0-10V ADC Sampling Interface(1/2-Input)

R730J/J2 Wireless Dry Contact Interface(1/2-Input)

R730KA/KA2 Wireless mA Current Meter Interface, 4~20mA(1/2-Input)

R730LB/LB2 Wireless Hall Type Open/Close Detection Sensor (1/2-Input)

R730E Wireless Accelerometer and Surface Temperature Sensor



R730MA Wireless Asset Sensor

R730MBA Wireless Activity Detection Sensor

R730MBB Wireless Activity Event Counter

R730MBC Wireless Activity Timer

R730T/T2 Wireless Push Button Interface(1/2-Input)

R730WA/WA2 Wireless Water Leak Detector(1/2-Gang)

R730WB/WB2 Wireless Water Leak Detector with Rope
Sensor (1/2-Gang)

R730WD Wireless Liquid Level Sensor

R730G Wireless Light Sensor



Create your own IoT Smart Living platform fast

Zigbee Intelligent Safeguard Systems



Z311A
Wireless Window Sensor



Z311E
Wireless Asset Tag



Z311J
Wireless Window Sensor,
IAS & On/Off Clusters Supported



Z312
Wireless Door Bell Button



Z311S
Wireless Infrared Motion Sensor
with Quad Beam Detector



W313
WiFi Window/Intrusion Sensor



Z311C
Wireless Window Sensor with
Glass Break Detector



ZB02J
Wireless 3 Scene & Mode Selector



Z311W
Wireless Flood / Water Sensor

Zigbee Intelligent Safeguard Systems

LoRa Alliance Member

Protocols Based on Zigbee HA V1.2 or LoRaWAN,
and can be customized for private protocol.



ZB11A/B/C/D
A : Wireless Motion Detector
B : Wireless Motion Detector with
Photo Sensor
C : Wireless Motion Detector with
Photo and Temp Sensor
D : Wireless Occupancy Sensor



Z602A/B
A : Wireless Siren
B : Wireless Siren with
GSM Connectivity



WFC1
P2P Wireless Indoor IP Camera,
Pan-Tilt & 2-Way Audio



WFC2
P2P Wireless Outdoor Dome
IP Camera, PTZ & 2-Way Audio



WFC3
P2P Wireless Indoor IP Camera,
Pan-Tilt & 2-Way Audio



WFC4
P2P Wireless Outdoor HD
IP Camera



WFC5
P2P Wireless Outdoor HD POE
IP Camera, Pan-Tilt



WFC6
P2P Wireless Indoor HD
IP Camera, 2-Way Audio

Zigbee Intelligent Safeguard Systems



ZB02E/I

E : Wireless Door Bell Button
I : Emergency Push Button



ZA10

Wireless Gas / Water Keeper



Z307 / A201

Wireless Rechargeable Fall Sensor



ZB01A/B/C/D

A : Wireless Motion Detector
B : Wireless Motion Detector
+ Photo Sensor
C : Wireless Motion Detection
+ Photo Sensor
+ Temperature Sensor
D : Wireless Occupancy Sensor



Z308

Wireless Wearable Presence
Tag + Panic Button



ZA01A/C

A : Air Pollution Detector
C : CO Detector



ZA01B/D

Wireless Gas Detector
B : Gas
D : Liquefied Petroleum Gas



ZA02A/C

A : Smoke Detector, Battery Powered
C : CO Detector, Battery Powered

Zigbee Intelligent Safeguard Systems

LoRa Alliance Member

Protocols Based on Zigbee HA V1.2 or LoRaWAN,
and can be customized for private protocol.



ZA02B/D

B : Gas Detector
D : Liquefied Petroleum Gas Detector



ZA02E/F

E : Smoke Detector/ Photoelectric,
AC Powered
F : Smoke Detector/ Photoelectric,
DC Powered



Z801WLS

Wireless Flood / Water Sensor



Z801TXB

Wireless Pulse Signal Detector
with 5 Extended Security Zone



Z801T03A

Wireless Scene Selector



Z831

Wireless Multifunctional
Control Box



Zigbee Intelligent Safeguard Systems



ZB05A
Wireless Electronic Door Lock
(Fingerprint/ Access Code/ RFID Card/ Mechanical Override Key)



ZB07
Wireless Electronic Door Lock
(Fingerprint/ Access Code/ RFID Card/ Remote Control/ Mechanical Override Key)



ZB08
Wireless Electronic Door Lock
(Fingerprint/ Access Code/ Remote Control/ Mechanical Override Key)

Z825L
+
Building Intercom System
Six Way Scene Selector with
RS485 Interface + Building
Intercom System



Zigbee Energy Management

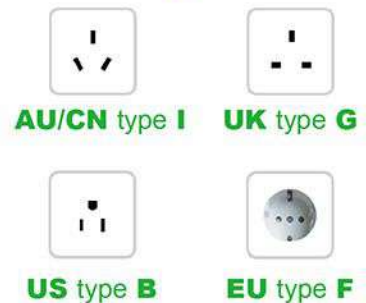
LoRa Alliance Member

Protocols Based on Zigbee HA V1.2 or LoRaWAN, and can be customized for private protocol.

Z803
Wireless Power Strip
with Power Meter
and USB Charger



Socket Type Selection



Z805B
Wireless RX Switch Module
with Power Monitor



Z808A/B
A : Power Plug with Power
Meter and USB Charger
B : Power Plug with Dimmer,
Power Meter and
USB Charger



Z809AH
Wireless Power Plug with
Power Meter (16A)



Z809AW
Wireless Power Plug with
Power Meter (10A)



Z809C/G
C : Wireless Plug and Play
Repeater with Backup
Battery
G : Wireless Plug and Play
Repeater



Z809A/B
A : Wireless Power Plug
with Power Meter
B : Wireless Dimmable Power
Plug with Power Meter



Z821
Wireless Multi-Channel
Energy Power Meter

Zigbee Energy Management



Z816B

U.S. Type Wall Socket
with Power Meter



Z816F

Schuko Type Wall Socket
with Power Meter



Z816G

UK Type Wall Socket
with Power Meter



Z816H

China Type Wall Socket
with Power Meter



Z816I

Wireless Wall Mounted
One Gang Power Socket
with Power Meter, China Type



Z815G

US Type Wall Switch
with Power Meter

Z815H

US Type Dimmer Wall Switch
with Power Meter



Z815A

One Gang Wall Switch
with Power Meter
EU / CN / UK



Z815C

Three Gang Wall Switch
with Power Meter
EU / CN / UK

Zigbee Energy Management

LoRa Alliance Member

Protocols Based on Zigbee HA V1.2 or LoRaWAN,
and can be customized for private protocol.



Z815B/D

B : Wireless Wall Mounted
Two Gang Power Switch
with Power Meter,
Fit with 86*86 Wall Box
D : Wireless Wall Mounted
One Gang Dimmer Switch
with Power Meter, Fit
with 86*86 Wall Box



Z815E

Wireless Wall Mounted
Two Gang Dimmer Switch
with Power Meter, Fit
with 86*86 Wall Box



Z800

Wireless Power Plug
with Power Monitoring



Z805A

EU Type Wireless In-wall
Switch Module with
Power Meter



Z810B

Wireless Load Control 2T
with LCD Power Monitor



Z817A/B

A : Ceiling Mounted 16A Relay
Switch with Power Meter
B : Ceiling Mounted
Dimmer with Power Meter



Z817C/D

C : Ceiling Mounted Motion
Sensor Switch
D : Ceiling Mounted
Motion Sensor

Zigbee Switch/Remote Control

Icons are Available for Custom Design

patent
pending



Z825A
One Gang Touch Switch
with Power Meter



Z825B
Two Gang Touch Switch
with Power Meter



Z825C
Three Gang Touch Switch
with Power Meter



Z825D
One Gang Touch Dimmer
Switch with Power Meter



Z825E
Two Gang Touch Dimmer
Switch with Power Meter



Z825F
Programmable 1 Scene
Control Touch Button



Z825G
Programmable 2 Scene
Control Touch Button



Z825H
Programmable 3 Scene
Control Touch Button



Z825I
Programmable 6 Scene
Control Touch Button



Z825J
Three Gang Touch Switch
with Power Meter and 3 Scene
Control Touch Button



Z825K033
Programmable 3 Scene
Control Touch Button_
1Toggle+1 Dimmer Switch



Z825K035
Programmable 3 Scene
Control Touch Button_
Curtain Control

Zigbee Switch/Remote Control

LoRa Alliance Member

Protocols Based on Zigbee HA V1.2 or LoRaWAN,
and can be customized for private protocol.



Z825K047
Programmable 4 Scene
Control Touch Button_
1Toggle Switch+ Curtain
Control



Z825K059
Programmable 5 Scene
Control Touch Button_
3 Toggle + 1 Dimmer
Switch



Z825K05A
Programmable 5 Scene
Control Touch Button_
2 Toggle Switch + Curtain
Control



Z825K065
Programmable 6 Scene
Control Touch Button_
Curtain Control



Z825K06D
Programmable 6 Scene
Control Touch Button_
3Toggle Switch+ Curtain
Control



Z825K06F
Programmable 6 Scene
Control Touch Button_
1 Toggle+ 1 Dimmer
Switch + Curtain Control



Z825K121
One Gang Touch Switch
with Power Meter and
2 Scene Control Touch
Button_Toggle Switch



Z825K122
One Gang Touch Switch
with Power Meter and
2 Scene Control Touch
Button_Dimmer Switch



Z825K133
One Gang Touch Switch
with Power Meter and 3 Scene
Control Touch Button_1 Toggle
+ 1 Dimmer Switch



Z825K135
One Gang Touch Switch
with Power Meter and
3 Scene Control Touch
Button_Curtain Control



Z825K221
Two Gang Touch Switch
with Power Meter and
2 Scene Control Touch
Button_Toggle Switch



Z825K222
Two Gang Touch Switch
with Power Meter and
2 Scene Control Touch
Button_Dimmer Switch

Zigbee Switch/Remote Control

Icons are Available for Custom Design



Z825K233

Two Gang Touch Switch with Power Meter and 3 Scene Control Touch Button_1 Toggle + 1 Dimmer Switch



Z825K235

Two Gang Touch Switch with Power Meter and 3 Scene Control Touch Button_Curtain Control



Z825K321

Three Gang Touch Switch with Power Meter and 2 Scene Control Touch Button_Toggle Switch



Z825K322

Three Gang Touch Switch with Power Meter and 2 Scene Control Touch Button_Dimmer Switch



Z825K333

Three Gang Touch Switch with Power Meter and 3 Scene Control Touch Button_1 Toggle + 1 Dimmer Switch



Z825K335

Three Gang Touch Switch with Power Meter and 3 Scene Control Touch Button_Curtain Control



Z826A

One Gang Touch Switch / Single Live Wire



Z826B

Two Gang Touch Switch / Single Live Wire



Z826C

Three Gang Touch Switch / Single Live Wire



Z826D

One Gang Touch Dimmer Switch / Single Live Wire

Zigbee Switch/Remote Control

LoRa Alliance Member

Protocols Based on Zigbee HA V1.2 or LoRaWAN, and can be customized for private protocol.



Z828

Programmable 6 Scene Control Touch Button



Z829

Programmable 6 Scene Control Touch Panel (Black)



Z829

Programmable 6 Scene Control Touch Panel (Golden)

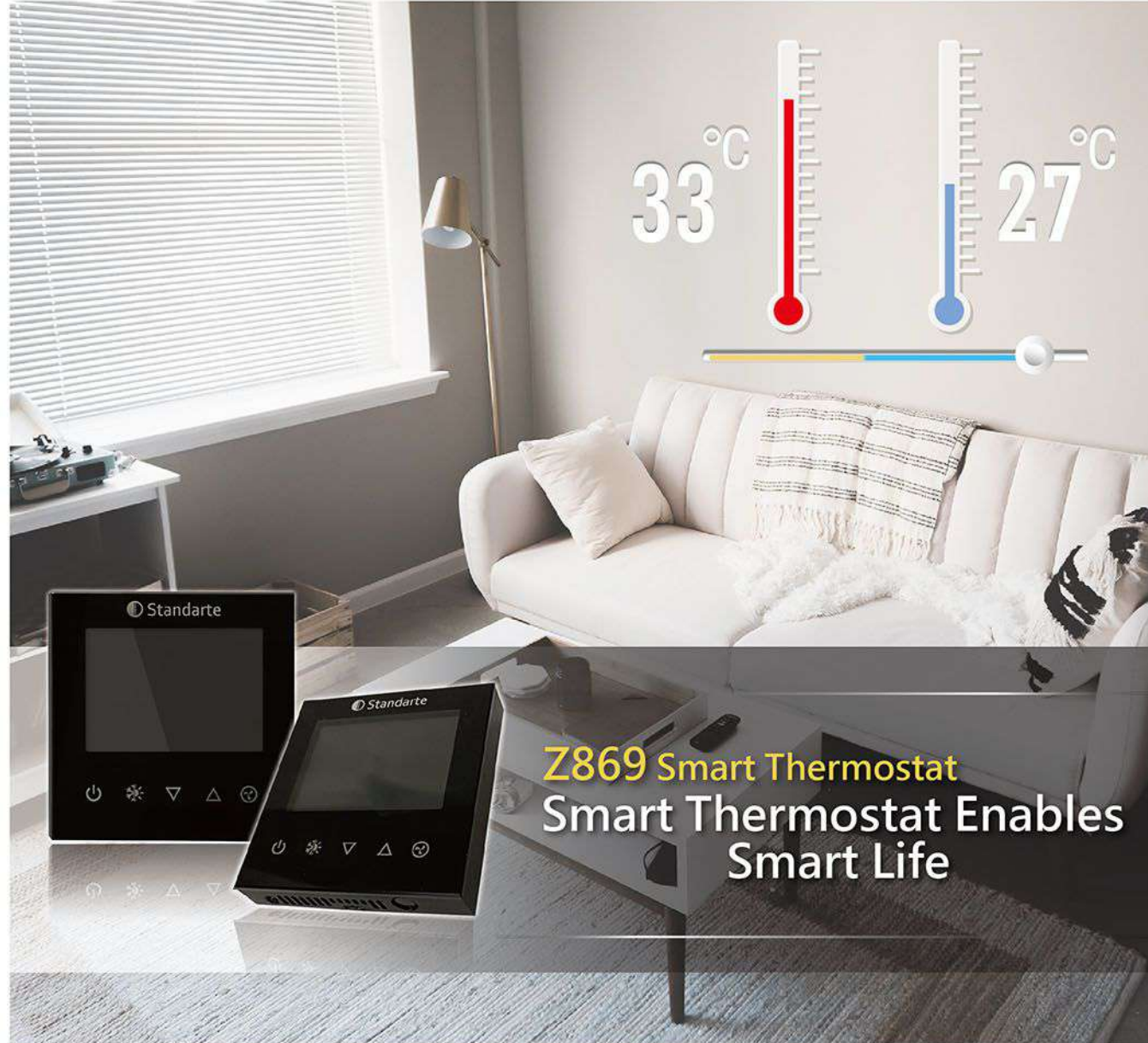


Z829

Programmable 6 Scene Control Touch Panel (Silver)

Zigbee Switch/Remote Control

Icons are Available for Custom Design



Zigbee Switch/Remote Control

LoRa Alliance Member

Protocols Based on Zigbee HA V1.2 or LoRaWAN, and can be customized for private protocol.



Z211
Wireless IR Blaster



Z806
Wireless RX Relay
Module Two Output



Z811
Wireless 4 Output Control
Module



Z311B/G/H
B : Wireless On/Off Light Switch
G : Wireless Light Sensor
H : Wireless Light Sensor
Dimmer Switch



Z501A/B/C
Wireless 4-key Remote
Controller with ON/OFF,
Level Control and
Panic Button



Z502A/B Wireless Remote Controller
with On/Off, Level Control and Panic
Button
Z502C/G Wireless Remote Controller
with On/Off, Dimmer, Mode Selector
and Panic Button



ZD01A/B/D
Wireless Curtain with Toggle
& Level Controller
A : Curtain
B : Drape
D : Shutter



Z825N
Wireless AC Curtain Control
Touch Switch



Z815N
Wireless AC Curtain Control
Switch

Zigbee Switch/Remote Control



ZB02A/B/C
Wireless Wall Switch
1Key,2Keys,3Keys



ZB02F/G
F : Wireless Dimmer Switch
G : Wireless Dimmer Switch
HA/ZLL Supported



Z812A
Programmable 8-Button
Scene Control Keypad



Z812B
Battery Operated 8-Button
Control Keypad



Z801RX
Wireless RX Relay Board



Z801TX
Wireless TX Switch Board



Z802
Two Way Wireless Switch Module
with Mechanical Switch

Zigbee Switch/Remote Control

LoRa Alliance[™] Member

Protocols Based on Zigbee HA V1.2 or LoRaWAN,
and can be customized for private protocol.



Z503
Wireless Local Commander

Patented



Z800R
Wireless Plug-in Repeater



ZC06
Wireless LED Light Tube
Dimmable

Patented



ZC07
Wireless LED Light Bulb,
Power Rate 5W
Dimmable

Patented



Zigbee RF Module



Z203
Cloud Home Gateway



Z206
Cloud Home Gateway



Z207 Smart IoT Controller
Z207A Smart IoT Controller, PA Version



Z201B
Wireless HA Coordinator with Security Center (CIE)



Z202E
Wireless TCP / IP Gateway Coordinator / Router



Z716S
Portable ZigBee Field Signal Meter



Z210
Wireless Coordinator / Router with IR & Security Center (CIE)



Z103A
Wireless Coordinator/ Router with USB Interface



Z108A
Wireless USB Dongle

Zigbee RF Module

LoRa Alliance Member

Protocols Based on Zigbee HA V1.2 or LoRaWAN, and can be customized for private protocol.



ZL01A
Industrial Grade RS232 IEEE 802.15.4 Adapter



ZL01B
Industrial Grade RS485 IEEE 802.15.4 Adapter



ZL01C
Industrial Grade RJ45 IEEE 802.15.4 Adapter



ZL01D
Industrial Grade IEEE 802.15.4 GPIO Controller



ZL01E
Industrial Grade USB IEEE 802.15.4 Adapter



ZL01F
IEEE 802.15.4 RS232 Straight-through Adapter



ZL01G
Wireless RGB LED Controller



Z110PE / Z110PA
Wireless RF Module with Power Amplifier



Z100A/Z100B/Z100C/Z100E
Wireless RF Module
Z100D
Wireless Dimmer RF Module

Zigbee Intelligent Environment Monitoring and Control System



Z713C / I / G / HC

C : Outdoor Solar Powered Soil Moisture Sensor

G : Outdoor Solar Powered UV / Temperature / Humidity / Soil Moisture Sensor

I : Outdoor Solar Powered UV/ Sunlight/ Temperature/ Humidity Sensor

HC : Outdoor Sunlight / Temperature/ Humidity / Soil Moisture Sensor



Z713E

Outdoor Solar Powered Water Temperature & PH Level Sensor



Z713CK

Outdoor Solar Powered Soil Moisture/Temperature/ Conductivity Sensor



Z713H

Outdoor Solar Powered Sunlight/ Temperature/ Humidity Sensor



Z712

Outdoor Temperature and Humidity Sensor



Z831

Wireless Multi-Functional Control Box



Z721C

Outdoor Soil Moisture Sensor

Zigbee Intelligent Environment Monitoring and Control System

LoRa Alliance Member

Protocols Based on Zigbee HA V1.2 or LoRaWAN, and can be customized for private protocol.



Z721W

Outdoor Immersion Inspection Sensor



Z721A

Outdoor Water Level Sensor



Z721CK

Outdoor Soil Moisture/ Temperature/ Conductivity Sensor



Z725A / C / CD

A : Outdoor High Capacity Solar Powered Temperature and Humidity Sensor

C : Outdoor High Capacity Solar Powered Soil Moisture Sensor

CD : Outdoor High Capacity Solar Powered Temperature, Humidity and Soil Moisture Sensor



Z711

Wireless Temperature and Humidity Sensor

Z716A / B

A : Wireless Temperature and Humidity Sensor with LCD Display

B : Wireless Temperature Sensor with LCD Display

Monitor and Control the IoT Devices Anytime, Anywhere



Interactive · Extensive · Intelligent · Complete